

## Presenters (alphabetical order)

Glenn A. Blackwell, Vice-President for Genealogy, Afro American Historical & Genealogical Society, Agnes Kane Callum (Baltimore) Chapter

Ron Castanzo, PhD., Associate Professor, Division of Science, Information Arts and Technologies, University of Baltimore

Brian Crane, PhD., RPA., Archaeologist for Montgomery County Planning

Kami Fletcher, PhD., Assistant Professor of African American History, Delaware State University

H. Russell Frisby, Jr., Esq., Partner, Stinson LLP; Commissioner, Maryland Commission of African American History and Culture

Donna T. Hollie, PhD., Vice-President for History, Afro American Historical & Genealogical Society, Agnes Kane Callum (Baltimore) Chapter

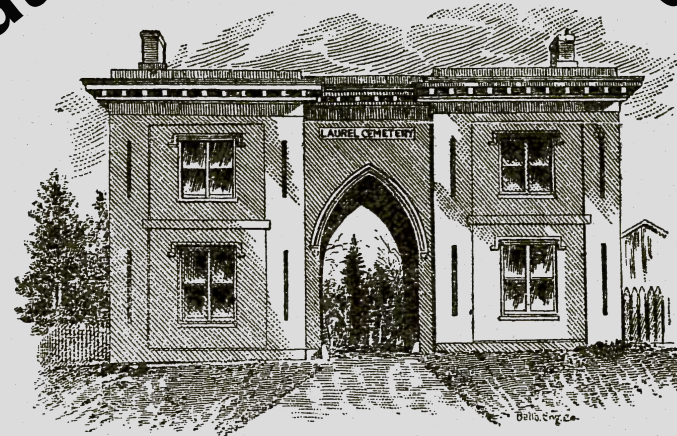
Elgin Klugh, PhD., Associate Professor, Department of Applied Social and Political Sciences, Coppin State University

Eileen McGuckian, President, Coalition to Protect Maryland Burial Sites

Isaac Shearn, PhD., Adjunct Professor, Coppin State University, University of Baltimore, and Community College of Baltimore County

# Laurel Cemetery Project

1852



1958

## Symposium

June 15, 2019

### Special Thanks to our Sponsors:

- Beverly Carter and the Thompson-Carter Family Fund
- The University of Baltimore Foundation
- The Yale Gordon College of Arts and Sciences, University of Baltimore
- The Coppin State University Development Foundation
- Maryland Humanities

Hosted by:

**Coppin State University**



**Talon Center**

This project was made possible by a grant from Maryland Humanities, through support from the National Endowment for the Humanities, the Maryland Historical Trust in the Maryland Department of Planning, and the Maryland Department of Labor, Licensing and Regulation. Any views, findings, conclusions, or recommendations expressed in this symposium do not necessarily represent those of the National Endowment for the Humanities, Maryland Humanities, Maryland Historical Trust, Maryland Department of Planning, or the Maryland Department of Labor, Licensing and Regulation.



**A collaborative research project involving:**



## Background Information

Laurel Cemetery (1852-1958) existed for over 100 years as a nonsectarian cemetery for Baltimore's African American community. In its early years, it was a premier burial site for people across Black Baltimore's socioeconomic spectrum. However, years of improper maintenance led to the eventual demolition of the site in 1958. Today, the Belair-Edison Crossing shopping center occupies the footprint of the old cemetery.



## History of the Laurel Cemetery Project

In spring 2014, University of Baltimore and Coppin State University professors initiated the Laurel Cemetery project as an inter-institutional project for students interested in cultural resource management, history, archaeology, and environmental sustainability. Through archaeological excavation, faculty and student researchers found conclusive evidence of existing burials. Their current efforts focus on public education, research into the lives of those buried at the site, and the erection of a memorial to recognize the burial ground.

## Advocacy for Burial Site Protection

Contact your local representative to advocate for the African American Burial Grounds Network Act. Find more info @ [mceachin.house.gov/media/press-releases/rep-mceachin-and-adams-introduce-african-american-burial-grounds-network-act](http://mceachin.house.gov/media/press-releases/rep-mceachin-and-adams-introduce-african-american-burial-grounds-network-act)

# Agenda

- 9:30-10 am **Registration**
- 10:05 am **Welcome, Introduction to the Laurel Cemetery Project**  
Elgin Klugh, Coppin State University
- 10:15 am **Archaeology at Laurel Cemetery**  
Ron Castanzo, University of Baltimore
- 10:30 am **Public Anthropology and Laurel Cemetery**  
Elgin Klugh, Coppin State University
- 10:45 am **Coffee Break**
- 11:00 am **Genealogical Research on Laurel Cemetery**  
Glenn A. Blackwell, BAAHGS
- 11:15 am **Selected Biographies from Laurel Cemetery**  
Donna T. Hollie, BAAHGS
- 11:30 am **Designing the Timeline Exhibit**  
Isaac Shearn, Coppin State University
- 11:45 am **Lunch Break**
- 1:00 pm **Panel Discussion: The Legal History of Laurel Cemetery and the Protection of Burial Sites**  
Brian Crane, Kami Fletcher, H. Russell Frisby Jr., Eileen McGuckian, Isaac Shearn
- 1:50 pm **Afternoon Break**
- 2:00 pm **General Forum: Plans for a Permanent Memorial**
- 2:45 pm **Closing Remarks and Acknowledgments**  
\*Please submit evaluation surveys at the registration table